



**ELWEMA**

SIMPLY INNOVATIVE

**WE SEE THE  
WHOLE PICTURE!  
CAN YOU TOO?**

Cutting-edge technologies  
for everyone who also thinks ahead



# OUR INNOVATION FOR YOUR SUCCESS

When we talk about innovations, we use a grand word for ultimately something quite simple: Our personal quest to always improve.

Needless to say, this persistent pursuit of perfection yields innovations, such as our thermal joining solutions or our steam cleaners, the high torsion resistance of our systems or the virtual commissioning as standard, perhaps using a virtual clone.

Whichever product range appeals to you for your production needs, you can always rely on one thing: We will provide state-of-the-art technologies to meet both your needs and our own high expectations.



## CLEANING SYSTEMS FOR THE HIGHEST CLEANING AND ENVIRONMENTAL STANDARDS

Our compact, modular system concept is based on highly efficient process technologies, which give excellent cleaning results while conserving resources.



## TESTING AND LEAK TESTING EQUIPMENT FOR TOP QUALITY AND PRODUCT PERFORMANCE

Whether you need adjustment and function test benches, systems for leak testing or multifunctional testing equipment – it is all assembled to suit your specific requirements. Our testing systems offer the performance you require and create the perfect combination together with our assembly solutions.

# STATE-OF-THE-ART TECHNOLOGIES FOR OPTIMUM RESULTS

## ASSEMBLY SYSTEMS FOR OUTSTANDING PERFORMANCE WITHOUT COMPROMISE

Our manufacturing solutions yield impressive outputs with maximum precision and due care, even under the most challenging assembly conditions. Whether an individual station or a complex robot-assisted production line for fully automated component assembly: Our innovative systems always impress with high availability and low susceptibility to failure.



### FOCUS ON

## OUR CONTRIBUTION TO THE ENVIRONMENT

Thanks to the holistic approach of our systems, we can achieve exceptional energy efficiency:

- // Low in energy consumption
- // Resource-efficient and eco-friendly thanks to low water consumption
- // Controllable energy demand
- // Space-saving design
- // Flexibly adaptable to changing requirements
- // Long service life



## RPM® SUITE – YOUR INDIVIDUAL ALL-ROUND CAREFREE PACKAGE

By interlinking our various technology concepts, you will benefit from measurable gains in the efficiency of your production. A single production line for your cleaning, testing and assembly operations will provide maximum system availability, a standardised operating platform, a comprehensive service, minimum consumption of operating resources and a maximum service life. An all-round carefree package indeed!



# WELL THOUGHT-OUT FROM START TO FINISH

ELWEMA machines and systems have a very long service life. This says it all really, as this statement refers to the long-established system design as well as the quality of the machines and their components.

It also comprises a reliable service, predictive maintenance and extensive retrofitting options should requirements change over time – without all this, the extremely long service life would simply not be feasible.

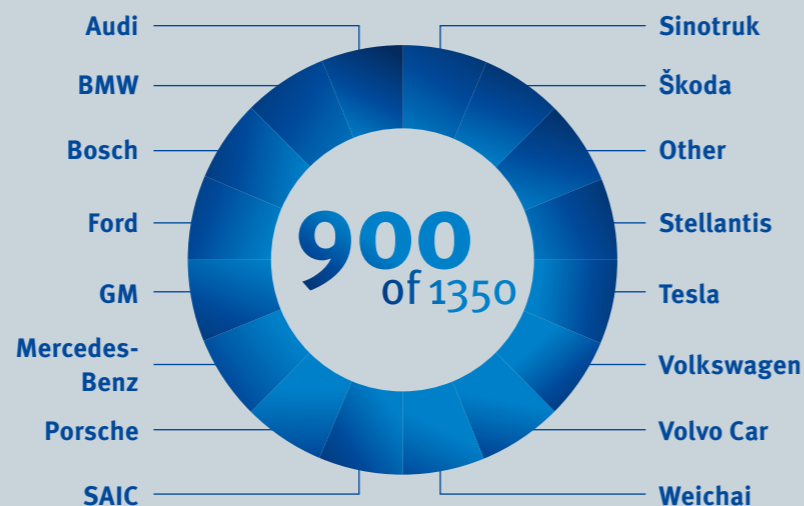
It's this long working life in particular that keeps customers satisfied. Only those happy with the performance of their system for a prolonged period will keep it integrated in their production processes in the long term!



## FOCUS ON

### SYSTEMS IN THE FIELD

Out of more than 1350 ELWEMA systems delivered since 1979, over 900 are still in full operation today. In other words, thanks to the sustainable design and solid construction, some of our machines and systems are in their second or third product cycle and have thus been in operation for over 30 years with full customer satisfaction.



### SYSTEM DESIGN YOUR REQUIREMENTS – OUR SOLUTIONS

Simply let us know what you need and we will develop your ideal cleaning, testing or assembly system – starting with the basic system design right through to the software development, taking into account all relevant interfaces for your production.



### DIGITALISATION INTEGRATION OF HARDWARE AND SOFTWARE

We develop, plan and integrate all parts through to the finished complete system. Systems can be integrated quickly into your production processes, without long downtimes and – thanks to a virtual commissioning beforehand – completely problem-free.



# WE ARE HERE FOR YOU – FOR THE WHOLE LIFE OF THE MACHINE

### SERVICE EVERYTHING FOR YOUR PROCESS RELIABILITY

Just in case you need us, our service technicians are available within 24 hours, wherever you are in the world. With remote maintenance or our Live Service with real-time support, any downtimes are also reduced. And our original ELWEMA spares and wearing parts will be with you in record time. Guaranteed.



### SUPPORT FOR AN ELWEMA LONG SERVICE LIFE

Regular check-ups for preventive maintenance of your systems ensure maximum machine availability. Training courses and technical seminars can improve system use for you in your workplace. And for older machines, a complete retrofit is worthwhile, with new parts, new software and adaptation to new requirements. Treat your systems to an effective makeover and reap the benefits of a new longer life cycle.





# EXPERIENCE IS OUR GREAT STRENGTH

Our background is in the automotive industry. You can therefore rely 100% on our cutting-edge technology. Fully automated automobile production requires total process reliability and efficiency – requirements which must also be fulfilled by the machines and systems we supply and integrate into production. Achieving this appropriately high availability has become second nature to the company, thanks to many decades of collaboration with the most demanding of customers. For you, this extensive expertise will pay off immediately: With the fast and constant usability of our systems and the quality you can achieve with them.

**Some examples of the benefits:**

- Quick assembly or quick recommissioning and a prompt start-up
- Guaranteed high quantities with a low error rate
- Good measurability via the cycle times
- The previously mentioned long service life with minimum downtimes.



Site: Ellwangen

# ELWEMA MILESTONES



**FOUNDED AS ELLWANGER WERKZEUG- UND MASCHINENBAU GMBH**

Engineering office for design services with fixture and assembly technology

**1979**

**INCREASE IN CAPACITY AND INTERNATIONALISATION**

Construction of own production and manufacturing areas at the current site

**1989**

**EXPANSION OF PRODUCT PORTFOLIO: TESTING TECHNOLOGY**

Enhancement of products and processes in assembly technology with testing technology for leak and function testing equipment

**1993**

**GLOBAL EXPANSION**

Development of the first flexible assembly modules and integration in production lines (Australia, Brazil, Hungary)

**1997**

**SITE EXPANSION**

Expansion of current site to include new production areas and an office building

**2000/2001**

**NAME CHANGED TO ELWEMA AUTOMOTIVE GMBH**

Transition from a family-owned company to a corporate group

**2007**

**EXPANSION OF PRODUCT PORTFOLIO: CLEANING, TESTING TECHNOLOGY, ASSEMBLY**

Development of new machine generation to RPM® Suite for interface reduction and assumption of process responsibility

**2008**

## FOCUS ON

# FACTS AND FIGURES

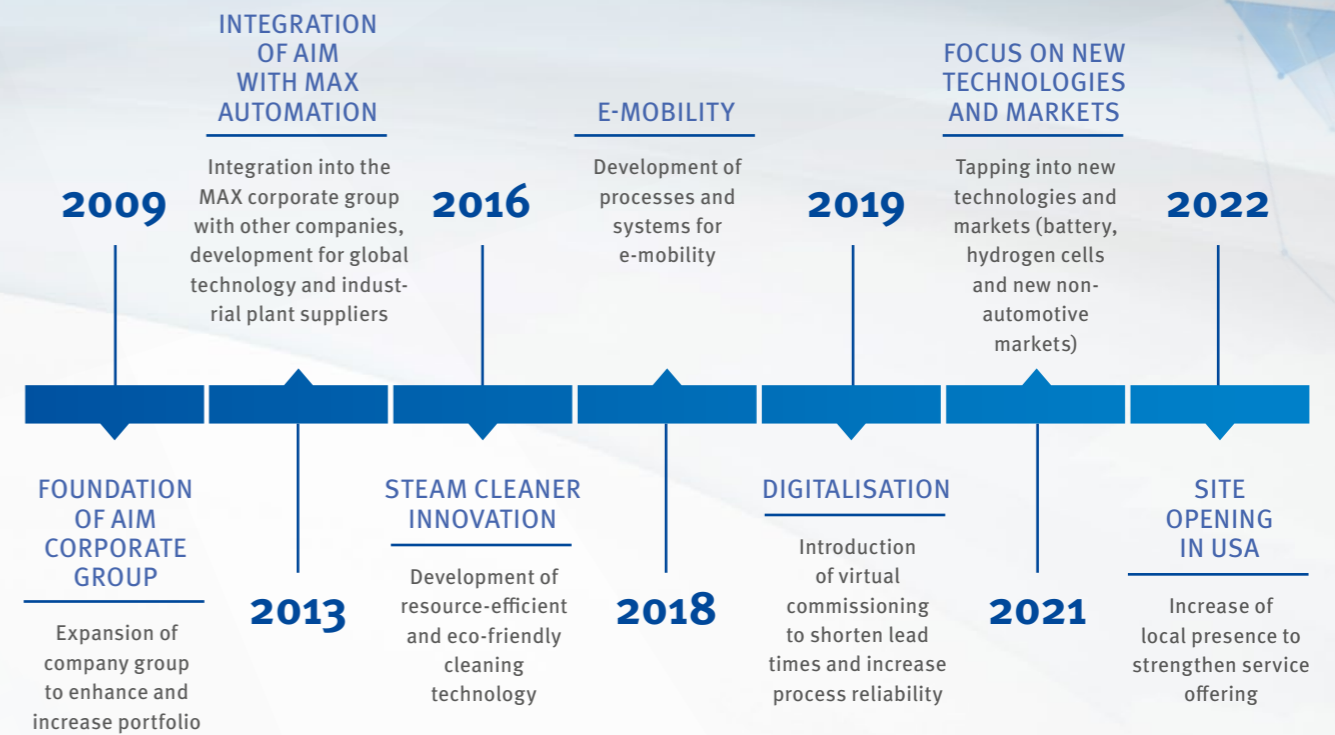
// Founded in 1979

// Two sites in Germany and one in the USA

// > 70 customer sites around the world

// Plants on five continents and in over 20 countries

// Owner: MAX Automation GmbH



# HERE FOR YOU, WHEREVER YOU ARE

# ELWEMA

SIMPLY INNOVATIVE

From our sites in Germany and the USA, we offer our customers a reliable global service on five continents, in over 20 countries and at over 70 sites. Thanks to our partner sites in Peking and Shanghai, our customers' Chinese plants are also supported with the usual promptness and quality.

**Detroit**  
USA  
Site

**Monschau**  
Germany  
Site

**Ellwangen**  
Germany  
Headquarters

**Shanghai**  
China  
Partner site

**Peking**  
China  
Partner site



ELWEMA Automotive GmbH  
Dr.-Adolf-Schneider-Str. 21  
73479 Ellwangen/Jagst, Germany

T +49 (0) 7961 8770  
F +49 (0) 7961 877590  
info@elwema.com



[www.elwema.de/en](http://www.elwema.de/en)